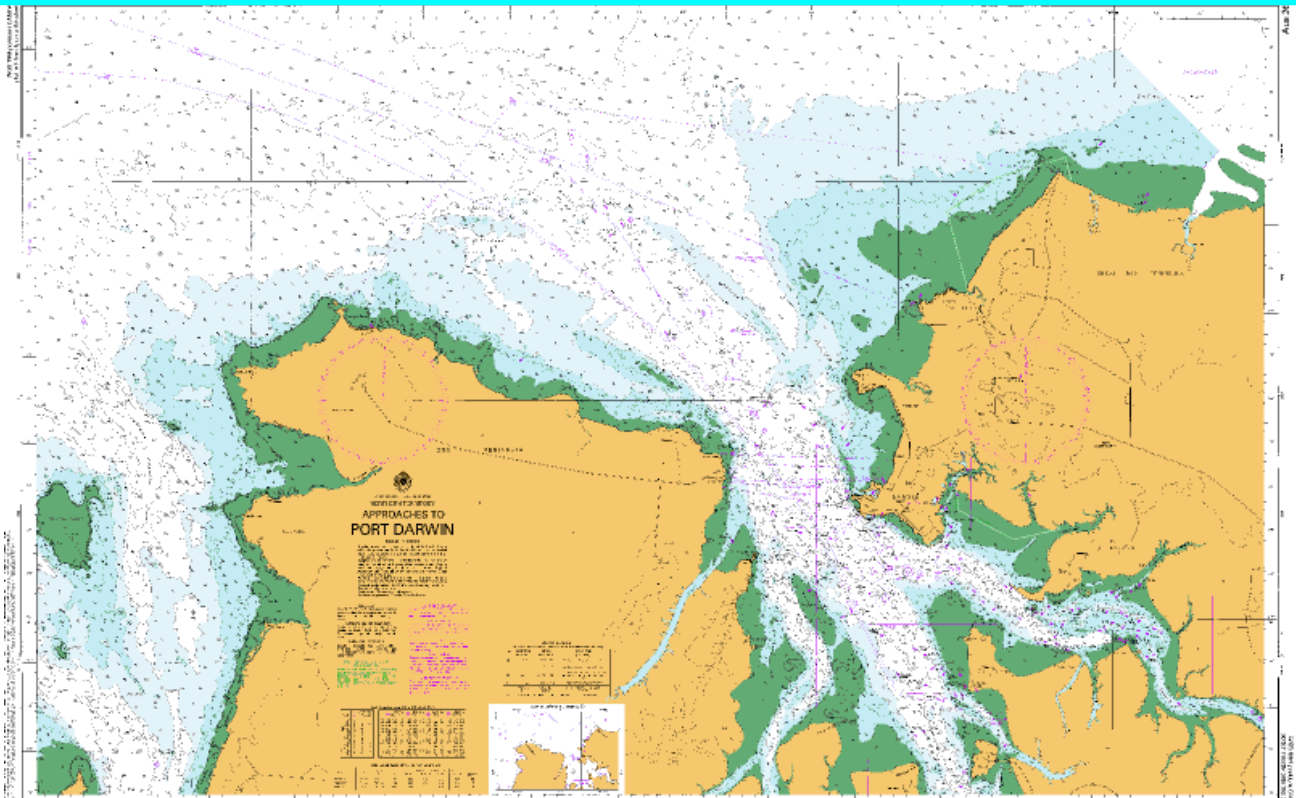


# MAR40618

## Certificate IV in Maritime Operations (Master up to 35 Near Coastal)

### Course Guide



*Proudly Territory Owned and Operated*

**SEAFOOD & MARITIME**  
**SMIT**   
**INDUSTRIES TRAINING**



## SUMMARY OF OCCUPATION

This qualification is suitable for those sailing as Master on vessels up to 35 metres in length within the exclusive economic zone (EEZ) or a Mate on vessels up to 80 metres in length.

### Licensing/Regulatory Information

This level of qualification is currently cited as meeting some of the requirements for certification as a Master up to 35 metres Near Coastal as defined by the National Standard for Commercial Vessels (NSCV) Part D.

This certificate will allow you to work as:

- Master on commercial vessels up to 35 metres long within the exclusive economic zone (EEZ).
- Master on vessels up to 80 metres long in inshore waters.
- Chief mate or deck watchkeeper on vessels up to 80 metres long within the EEZ.

## WORKING CONDITIONS

Masters serving on larger merchant vessels or deep-water fishing boats spend long periods at sea, which are usually followed by equal time ashore. Those serving on smaller, coastal ships, such as ferries, may return to shore each night. While at sea, a ship's Master generally works in shifts, sharing time on duty, or watch, with the ship's other officers, however, they must be prepared to deal with emergency situations which may arise at any time. They generally work in all weather conditions. Those working on coastal vessels and other ships which return to port each night, may remain in port during severe weather.

## TOOLS AND TECHNOLOGY

Masters usually work on the navigation control centre of a ship. They use specialised navigation equipment, such as radar, sonar and satellite navigation, to plot a course and determine their precise location, as well as that of any obstacles. Ships use a range of communication technologies, including marine radio and other signalling equipment, such as flags. The Master will also need to be familiar with medical and emergency equipment, such as flares, firefighting equipment and lifesaving equipment.

## ENTRY REQUIREMENTS

There are no entry requirements for this qualification. However, it is expected that students will have appropriate language, literacy and numeracy skills to complete the training and assessment requirements. Prior to commencing this course, students will participate in a language, literacy and numeracy (LLN) assessment however, students who can provide evidence of completing an Australian Certificate II or higher-level qualification will not need to sit the test.

SMIT's LLN assessment levels are based on the Australian Core Skills Framework (ACSF) in the skills of:

- Reading Level 3
- Writing Level 2 to 3
- Oral Communication Level 2 to 3
- Numeracy Level 2.

## YOUR COURSE

There are 15 core units to be completed in this qualification.

Code	Unit of Competence	Field
MARA003	Manage loading, discharging and stowing of cargo	Core
MARA004	Manage vessel stability	Core
MARB010	Plan and supervise routine maintenance on a vessel up to 80 metres	Core
MARB030	Slip or dock a vessel and maintain hull on a vessel up to 80 metres	Core
MARC011	Manage a propulsion unit using appropriate engine systems and support services	Core
MARC012	Monitor and manage vessel operations	Core
MARC014	Operate deck machinery and steering gear on a vessel up to 80 metres	Core
MARF010	Work safely in confined spaces on a vessel	Core
MARF027	Apply basic survival skills in the event of vessel abandonment	Core
MARF028	Follow procedures to minimise and fight fires on board a vessel	Core
MARF029	Meet work health and safety requirements	Core
MARF030	Survive at sea using survival craft	Core
MARG002	Manage a small crew	Core
MARH006	Forecast weather and oceanographic conditions	Core
MARH015	Manage and maintain a navigational watch on board vessels up to 80 metres	Core
MARH016	Plan and navigate a passage for a vessel up to 80 metres	Core
MARH017	Use wheelhouse equipment for safe navigation	Core
MARI004	Observe regulations to ensure safe operation of a vessel up to 80 metres	Core
MARJ007	Monitor environmental management on a vessel	Core
MARK003	Manoeuvre a vessel up to 80 metres	Core
MARN004	Manage seaworthiness of a vessel up to 80 metres	Core

## ELIGIBILITY

To be eligible for a Master less than 35 metres near coastal certificate you must:

- Be at least 16 years old on the certificate issue date.
- Hold either a Master less than 24 metres near coastal or Mate less than 80 metres near coastal certificate of competency.
- Meet medical, eyesight, sea service and course requirements.

## CERTIFICATE REVALIDATION

A Master less than 24 metres near coastal certificate of competency expires five years after it is issued or revalidated. To keep working using your certificate you need to revalidate it every five years. To revalidate you need to:

- Meet medical and eyesight requirements
- Supply a copy of your existing certificate
- Complete and submit a Certificate of Competency application (Form 426)

## FACE TO FACE COURSE DURATION AND DELIVERY METHOD

Face to face contact hours of 15 days which is mostly delivered through hands on tasks on our training vessel (SMIT Advance) at Francis Bay Marina.

Face to face will include theory and practical tasks, flare, radio, survival at sea.

**Please Note: There is a requirement to do homework throughout and at the end of this course.**

## DISTANCE COURSE DURATION AND DELIVERY METHOD SMIT SUPPORT

Learning via distance through technology such as Dropbox has a strong focus on the environment and the long term sustainability of our planet, gone are the days where we need to waste paper resources with printing.

We have taken the step and made a commitment to embedding sustainability principles across all our activities.

Studying your qualification through cloud based learning means:

- Cloud gives students a unique set of soft skills in addition to their studies. These include skills such as time management, the ability to work independently, self-motivation and computer skill.
- Flexibility; you can study when and where you want. Our courses and programs work beautifully across all devices while providing you with live academic support. Now all of your training and learning materials will be available from any device, PC, MAC, iPad or Android devices.
- Our Trainers and Assessors are available to answer any of your queries or help you through your studies to achieve a successful outcome. Trainers will contact you either via phone or email on a regular basis throughout your studies to keep you motivated and on track.
- Studying in cloud means that you will see your results and feedback for every submitted assessment much faster. Trainers are able to login and see how you are progressing and add helpful hints electronically throughout your learning journey.
- You no longer need to sit in a classroom environment for weeks on end, losing valuable work time and in some cases loss of employment.
- To complete your qualification, you will need to finish and be made Competent in all written assessment tasks. Practicals for First Aid, Shipboard Safety, Radio and Navigation can be booked in after completion of all written work. It is to your advantage you practice and practice the tasks required for the AMSA Mandated Practical Assessment (AMPA).
- If you have any prior qualifications for Shipboard Safety, First Aid, Radio you may be eligible for a Credit Transfer for any of those units.
- We strongly suggest that you attend the Navigation face to face (2 day Coxswain, 8 day Master up to 24). If you are confident you can display your skills and knowledge during the AMPA assessment there is no need to attend.
- ALL Students need to attend for the AMPA and must satisfy the requirements as set out by AMSA.
- Dates for practicals are set out in the calendar. Information is available on the website or from our Administration Staff.

Please see our Student Study Guide for more information about cloud learning.

## **SMIT SUPPORT**

We pride ourselves on our friendly and approachable Training and Administration Staff. Everyone working at SMIT is more than happy to help with your queries or concerns. Extra mentoring help is available upon request.

## **SMIT SUPPORT**

We pride ourselves on our friendly and approachable Training and Administration Staff. Everyone working at SMIT is more than happy to help with your queries or concerns. Extra mentoring help is available upon request.

## **CREDIT TRANSFER OR RPL**

SMIT believes that no learner should be required to undertake a unit of competency for which they are already able to demonstrate satisfactory achievement of the performance outcomes, as stated in the endorsed training package.

Clients who consider they already possess the competencies identified in all or part of any course/qualification offered by SMIT may seek recognition. Have a chat with one of our friendly trainers and see if you are able to have a credit transfer or recognition of prior learning (RPL).

## **FEES AND PAYMENT TERMS & CONDITIONS**

- A deposit of \$200.00 is required before the first day of the course.
- Full payment of course fees is required before or on commencement of the course.
- Under certain circumstances, SMIT staff will discuss and agree on a payment plan with the student.
- A Qualification Certificate, AMSA Mandated Practical Assessment or Interim Certificate of Competency will not be issued until the full fees have been paid.

- Please check with Administration staff to see if you are eligible for a Northern Territory Government funded place. (Please note this is available to Northern Territory residents only). SMIT adjusts prices occasionally so please check on enrolment.
- When an employer is paying for the student to complete a course, a Purchase Order is required by the employer before course commencement. A deposit is not required.
- An invoice for payment will be issued to the employer at the commencement of a course. Payment terms are 14 days.
- Fees may be paid by Credit Card at the reception or over the phone, by cash or by Bank Transfer.
- **Bendigo Bank details: Account Name: SMIT; BSB 633000; Account Number: 167536564**

**SMIT reserves the right to cancel a course if the numbers do not meet the minimum requirement to commence the program.**

## INTERIM CERTIFICATE

After completing and passing your Qualification with SMIT, and if all prerequisites are met, SMIT may issue an Interim Certificate of Competency if required. Please make sure that you give us at least 1 week's prior notice. This will be valid until you receive your final Certificate of Competency from AMSA. To apply for your final AMSA Certificate of Competency, you must submit a Certificate of Competency Application and other forms and evidence through an approved Australia Post Centre. See the AMSA website for more information. <https://www.amsa.gov.au/qualifications-training/domestic-qualifications/coxswain-grade-2-near-coastal>

## WHAT TO BRING FOR DISTANCE OR FACE TO FACE TRAINING

On enrolment at SMIT you will be given a backpack and a hat. Contents of the backpack include:

- Pencils, pens, highlighters, coloured pencils
- Maths kit for the navigation components of your training
- Notebook
- A pack containing all the AMSA forms that you will need to submit on completion of your studies.

You will need to purchase a copy of the Australian Boating Manual. This can be purchased at SMIT or alternatively you can order your copy from the Australian Boating Manual website at: <https://www.australianboatingmanual.com/>. Cost is \$70.00 per book.

You will need to bring your:

- Identification: A current Australian Driver's License or Passport.
- For practical assessment on board a vessel: closed in shoes, long sleeved Hi-Viz shirt, long pants, hat & sunscreen.

Transport to the vessel will be provided if you do not have your own vehicle.

Meals: Please bring your own lunch or use a cafe nearby. Coffee, tea and biscuits are supplied.

## ENROLMENT PROCESS

The enrolment form can be downloaded from SMIT's website, completed electronically and then emailed to [admin@smit.com.au](mailto:admin@smit.com.au). Forms are also available at reception. To secure your place in this qualification we ask that your enrolment form and payment/deposit are submitted to SMIT before the commencement of the course.

## DOCUMENTS REQUIRED

To obtain your AMSA certification, you will be required to submit the following AMSA documents:

- Certificate of Competency Application (AMSA 426)
- Eyesight Test Certificate (AMSA 542)
- Evidence of Sea Service

and (issued by SMIT at the completion of your assessments):

- A copy of your Certificate

Seafood and Maritime Industries training is proudly supported by:



***Proudly Territory Owned and Operated***



**Phone: (08) 8984 4522**

**Address: 10 - 12/110 Reichardt Road, Winnellie 0820 NT**

**Postal: PO Box 36948, Winnellie, 0821**

**Email: [admin@smit.com.au](mailto:admin@smit.com.au)**

**Website: [www.smit.com.au](http://www.smit.com.au)**

**National Provider No: 1112**

**ABN 21 070 720 517 ACN 070 720 517**